



# Happy Campers at Harrand Creek

2023 - 2024 School Year



# Office Staff

Dr. Jason Hadden

Principal

Audrey Windham

Assistant Principal

Kathryn Connors

Counselor

Deana Trimm

Bookkeeper

Lindy Little

Clerical Aide

Shelley Cammarota

School Nurse

# Meet the Teacher

- ★ 4th year teaching
- ★ Grades taught: Kindergarten and 2nd
- ★ Last year: Kindergarten at HCE
- ★ Graduated from Troy University in 2010 with Broadcast Journalism Degree
- ★ Live in Enterprise with my husband, 2 daughters and my son
- ★ Graduated from University of Phoenix with a Master of Science in Elementary Education K-6L
- ★ Lived all over (Military Brat)
- ★ Hobbies: Reading, movies, spending time with family, and cooking





# Contact information

**Mrs. McKenzie: Room 201**

**Email: [bmckenzie@enterpriseschools.net](mailto:bmckenzie@enterpriseschools.net)**

**School and google phone numbers:**

(334) 722-1032 (Google phone number)

(334) 347-5383 (School phone number)

**You may also reach my on our Class Dojo App**

See information from open house!

# Start / End Times & Arrival and Dismissal

## Times and Procedures



- Students are counted tardy if not in their classroom by 8:00 a.m.
- Dismissal begins at 2:50 p.m.
- Students should not arrive before 7:20 a.m unless transported by a school bus.
- All car riders are to be dropped off and picked up in the front drive. Do not park and walk up to get your child. The car line will be one way and routed through the cul de sac.
- Walkers are to use the crosswalk(s) in the morning and afternoons. Walkers should be walking off campus - not to cars parked on the curb or parking lot.
- Bus riders and day care van riders will use the side drive for drop off and pick-up.
- Have your student(s) KIDaccount Card visible and ready to be scanned - this will help the dismissal process.
- Adults should remain in their vehicles



<https://www.youtube.com/watch?v=OS1kCwFMask>

# Check In / Check Out Procedures and Transportation Changes

- Parents must check students in and out through the school foyer. Identification will be required. A complete listing of all persons authorized to check out a student should be completed upon registration on a check out card. No one will be allowed to check out a student unless they are listed on this card.
- When checking out your child, call the school office when you are in the parking lot so we can get your child to you as quickly as possible.
- All transportation changes need to be emailed to [hceoffice@enterpriseschools.net](mailto:hceoffice@enterpriseschools.net) by 2:00 PM.







# Attendance Policy

- Students will be allowed a maximum of 10 excused absences accompanied by a parent note per school year.
- Any student with seven unexcused absences during the school year may be referred to Early Warning Court.
- Chronic absenteeism is defined by the state as being absent 15 or more days.
- Students who are not in class at 8:00 a.m. will be counted tardy. Checking out early is also considered tardy. On the 10th unexcused tardy, a referral to the Enterprise City Schools System's Attendance Supervisor will be made.





# Student Conduct

- Students are expected to conduct themselves in an acceptable manner at all times and are required to conform to school and classroom policies and regulations.
- Inappropriate student behavior will result in some form of discipline.
- Corporal Punishment is an option. If you do not approve of corporal punishment, you need to write a letter stating your decision and submit the letter to our office staff.

# Cellular Phones and Other Electronic Devices

“Away for the  
Day”



# Medications

- All medications, prescription and over the counter, must be delivered to the school nurse by a guardian. Parents must make an appointment with the nurse by calling the school office. No walk up medication drop offs.
- See the school nurse, Mrs. Cammorata, for additional information.



## Visitors/Volunteers

- As much as we welcome your support and interest there will be no visitors or volunteers allowed in the building without prior permission from the principal.

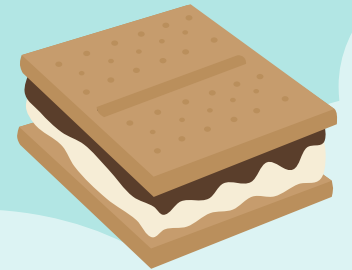
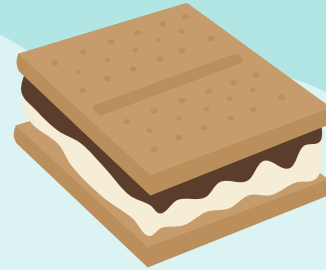
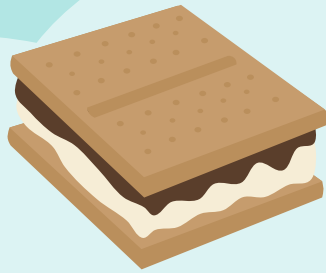
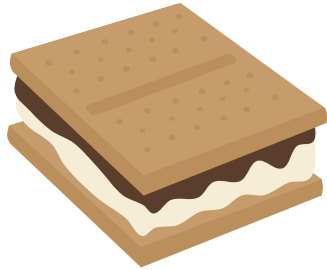
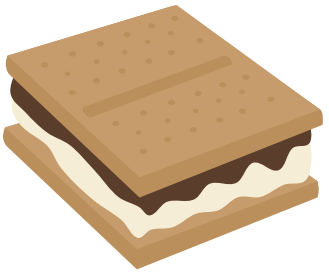


---

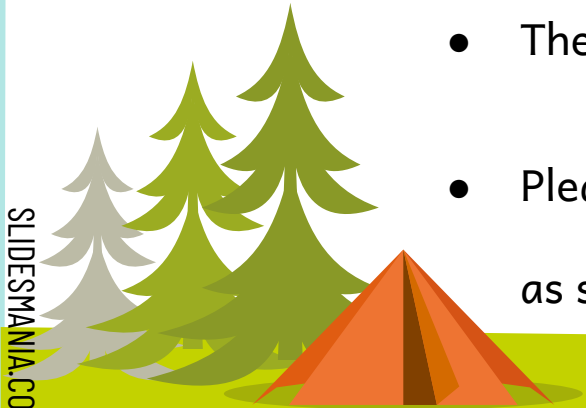
# VOLUNTEER

---

# Other Information



- Please keep addresses and phone numbers current.
- If there are custody issues, please provide a copy of custody papers to the counselor.
- The Free/Reduced meal application is on-line. ([enterpriseschools.net](http://enterpriseschools.net))
- Please read the student handbook and sign the forms in the back. Return those forms to school as soon as possible.





# ENTERPRISE CITY SCHOOLS

## ENTERPRISE, ALABAMA

*Our vision is to develop principled students prepared for life after graduation.*

[Parent Portal](#)[Facebook](#)[Twitter](#)[Menus](#)[Staff Directory](#)[Home](#)[Our District](#)[Our Schools](#)[Departments](#)[Menus](#)[Registration](#)[Calendar](#)

EHS ROTC



### Quick Links

- ▶ 2022-2023 School Calendar
- ▶ Free/Reduced Meal Application
- ▶ Kelly Services Employee Login
- ▶ ESS/Pay Stub Viewer
- ▶ Schoology
- ▶ Time and Attendance
- ▶ PowerSchool Teacher Login
- ▶ PowerSchool Admin Login
- ▶ PowerSchool Parent/Student Login
- ▶ PowerSchool Professional Learning (PD)
- ▶ MySchoolBucks

[From the District](#)[For Teachers](#)[For Parents](#)[For Students](#)

- [Alabama Literacy Act Information](#)
- [Anti Bullying Form](#)
- [AR Home Connect](#)
- [Calendar 2021-2022](#)
- [Child Nutrition Home Page](#)
- [Community Resources](#)
- [CJHS Handbook 2021-2022](#)
- [Digital Device Policy for ACAP Testing](#)
- [DJHS Handbook 2021-2022](#)
- [Elementary Handbook 2021-2022](#)
- [ESL Parent Page](#)
- [Family Reading Resources](#)
- [Free/Reduced Meal Application](#)
- [Football Broadcast Channel](#)
- [Math Website for ECE](#)





# Contact Information

## Email

bmckenzie@enterpriseschools.net

## Phone Numbers

School: (334) 347-5383

My Google Number: (334) 722- 1032

## School Website Page

<https://www.enterpriseschools.net/Domain/1664>



# Classroom Information

A central illustration of a campfire with orange and yellow flames, surrounded by logs. Six sticks with marshmallows are positioned around the fire, with arrows pointing from each marshmallow to a text box. The background is a warm orange gradient with stylized smoke clouds.

## Class Dojo

Used for communication such as texting, updates, and reminders

## Google Phone Number

Used for phone conferences and emergencies. I will NOT answer texts on this number.

## Classroom Consequences

I follow a list of consequences unless deemed necessary to skip.

## Classroom Management

Economy = Students will earn money for good behavior and will get to spend it every other Friday in our class store.

## Homework

Will be given on Monday and is due on Friday. It should not take long to complete and is beneficial to your child's success.

## Newsletters

Each Monday your child will receive a newsletter in their daily folders with IMPORTANT information



Become a ClassDojo School for the '22-'23 school year. [Learn more](#)

# Bring every family into your classroom

Join **95%** of **U.S.** schools using ClassDojo to engage kids and connect with families! [Free for teachers, forever.](#)

Sign up as a...



Teacher



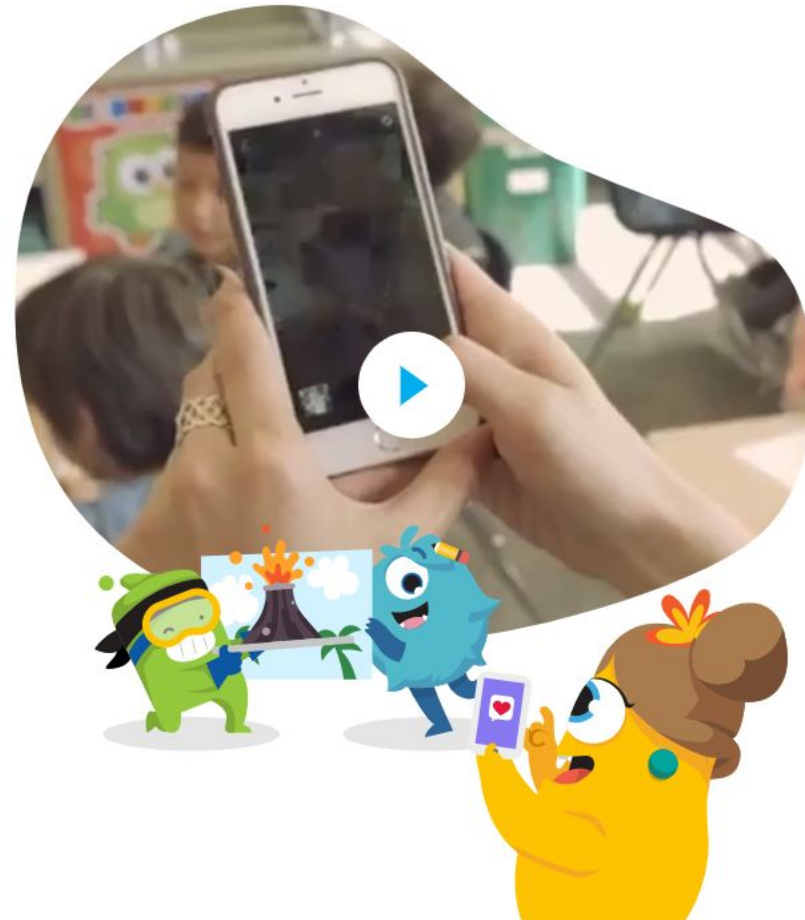
Parent



Student



School Leader





**To: Test Student and Test Student's parents**

From: Mrs. Nall



**Please join our classroom community on ClassDojo**

I'm using ClassDojo to connect with families, share classroom moments, and much more.  
Please join to stay connected!

**PARENTS:**

**New to ClassDojo?**

1. Download the ClassDojo app
2. Open app and tap 'Parent' to create a parent account
3. Enter name, email & create a password
4. Tap 'Add child (+)' and use this code:

PEBALSMR3

**Already have a Parent Account on ClassDojo?**

1. Open the ClassDojo app on your phone
2. Log in as a Parent (if you aren't already). Ensure you're logged in as a Parent, not a Student or Teacher!
3. Tap the 'Kids monster' at the bottom of your screen and then tap 'Add child'
4. Add child using this code:

PEBALSMR3

**Included in your child's folder**

# Schedule

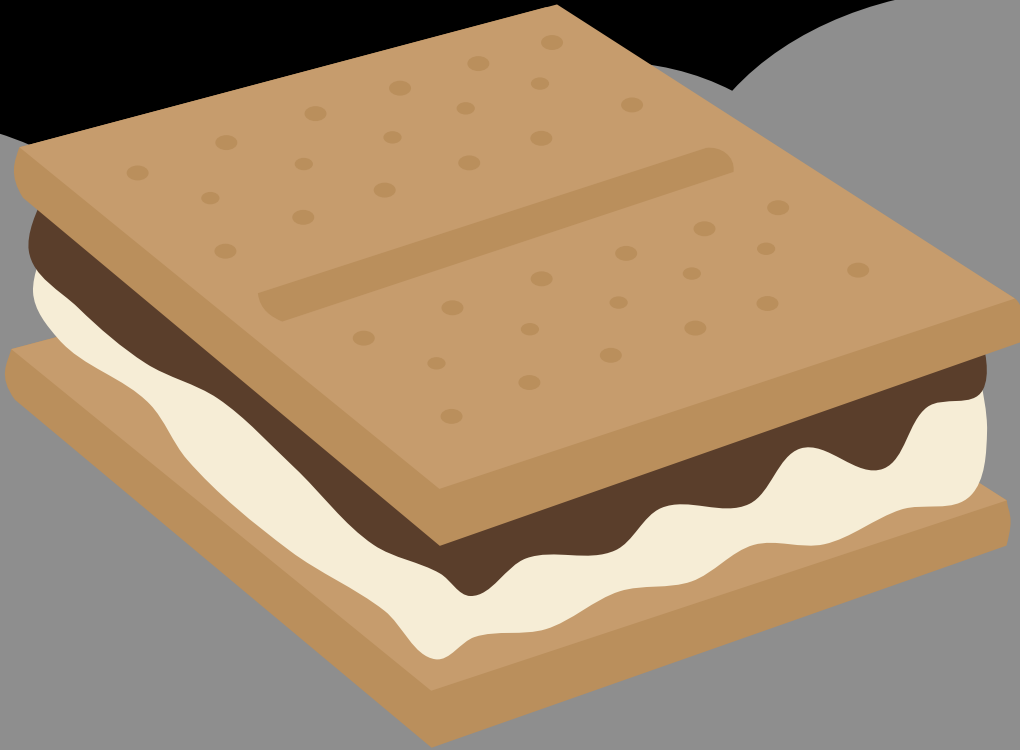
## Third Grade

7:45-8:10	Homeroom Duties/Morning Work
8:15-8:55	P.E.
8:55-9:00	Bathroom
9:00-9:25	Morning Meeting
9:25-10:25	Math (Tier 1: Whole Group and Small Group)
10:25-11:00	Math (Tier 2)
11:00-11:45	ELA CKLA Block 1
11:45-12:15	Lunch
12:15-12:20	Bathroom
12:20-12:35	ELA CKLA Block 1 (Cont.)
12:35-1:35	ELA CKLA Block 2
1:35-2:05	ELA (Tier 2)
2:05-2:20	Break/Bathroom
2:20-2:50	Science/ Social Studies
2:50-2:55	Prepare for dismissal



# Other Important Information

- No drop off BEFORE 7:20 a.m.
- During dismissal, all cars will come through the main car line and will NOT go through the bus line.
- Any outside food needs to be repackaged (no McDonald's bags).
- Your child is encouraged to bring a personal water bottle
- You can pay for your child's lunch online; food prices are listed in the Parent/Student Handbook



**We are excited for a great year with you at  
Harrand Creek Elementary!**

